



OfficeOne

Turning IP Communications Chaos Into Order

Voice | Chat | Video | Multimedia | Full suite of applications | Secure | Global connect | IP Based | Cost Effective

Parallel Communications Ltd. is an innovative company focusing on providing a suite of real-time, converged, comprehensive and easy-to-use enterprise secured communication services.

The company supplies service providers and enterprise customers with communications solutions that enable value added IP-data, voice and multimedia services.

PROVIDING YOUR EMPLOYEES WITH A SOFTWARE BASED SECURE, INTEGRATED AND COLLABORATIVE COMMUNICATION SOLUTION

OfficeOne enables, within a completely secure Enterprise VPN, a rich set of real-time communication services, such as point-and-click converged voice applications, as well as other services such as chat, desktop collaboration, video, recorded services, call center and more.

In addition, OfficeOne, with its unique converged platform that encompasses not only VoIP, but also PSTN and cellular roaming will increase employee productivity, reduce telecom costs and build stronger customer relationships, even when employees are working from home, on the road, or from a small branch office.

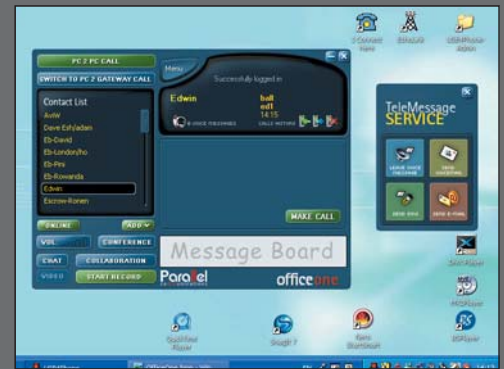
Perhaps even more importantly, OfficeOne bypasses the security threats found in products offered by most public internet communications providers, such as port scanning and other configurations that allow for hostile hacking activity to the enterprise network.

OfficeOne - The complete and converged Desktop Communication Center for the enterprise

OfficeOne is an IP-based, converged Enterprise software communication suite. It brings fully functional interactive voice, text, video, call center, PBX and collaboration capabilities to any desktop, laptop or connected PDA in the organization - providing employees with an unprecedented set of communications tools that complement enterprise PBX.

The OfficeOne IP-based product uses the existing corporate VPN network to provide a truly converged voice, data and video solution allowing users to perform all of their communications needs within a single network connection.

For extra security, OfficeOne encrypts all its communication services.



OfficeOne Desktop User Interface

What does the OfficeOne solution include?

- **Next Generation Communication Platform (NGCP)**
Centralized server(s) running the communication applications.
- **OfficeOne Desktop Communication Center (ODCC)**
User friendly client software installed on the employee desktop.
- **OfficeOne Accessories**
A family of IP phones and USB-connected communications accessories.

Accessories



NGCP

VoIP Telephony

Supports standard IP Phone devices as well as PC based soft phones providing employees with greater mobility.

Secure Communication

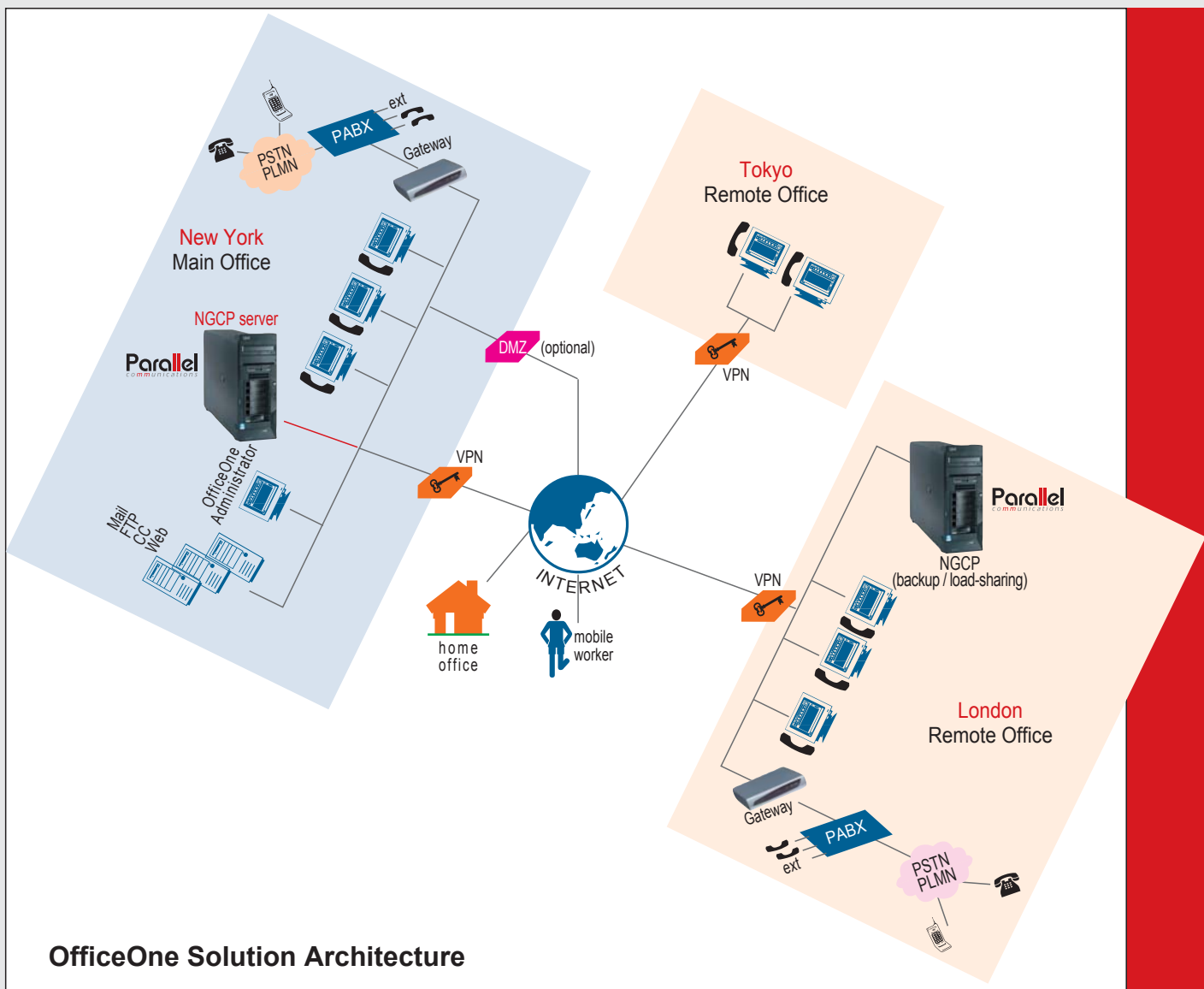
Enables employees to work within their enterprise secure VPN. OfficeOne provides strong encryption options, preventing eavesdropping and other security threats.

Video Conference

OfficeOne allows employees to videoconference. In addition, communication with LAN-based cameras enable surveillance and control of remote sites.

Desktop Colla

Desktop control sharing. E various applications such presentations, remote cu and remote training o



Key Features & Benefits

- Delay-tolerant superb voice quality
- Smooth enterprise VPN integration
- Smooth Firewall traversal solution
- Bandwidth efficiency
- Hybrid technologies converged solution
- Secured communication
- Single platform, Plug & Play
- Centralized management
- Central contacts management
- Scalable solution
- Cellular roaming enabled
- Highly redundant

Collaboration

Enables sharing
as interactive
customer support
of employees.

Call Center

OfficeOne supports key call center capabilities, including multi-calling, agent supervision and sophisticated IVR navigation features.

Multimedia Messaging

OfficeOne provides a wide range of multimedia communication tools including SMS, MMS, voicemails, voice-email, video mail and session recording.

Instant Messaging

Supports private IM which is encrypted and virus protected. Supports file transfer and chat history.

Turning IP Communications Chaos Into Order

Voice

- Smooth VoIP firewall traversal by our advanced technology
- G.711, G.723.1 codecs support
- PC2PC, PC2Phone
- PC2Cellular - Mobile Roaming
- Remote extensions
- Conference calls up to 80 users
- Call recording
- Call log CDR
- Bluetooth earphone support
- Echo cancellation
- Hardware IP-Phone support
- International call termination

Video

- Smooth Video over IP firewall traversal by our advanced technology
- Video conferencing
- Video surveillance
- Video recording
- H.263 codec support
- Adjustable fps rate
- SIP/H.323 Remote IP camera streaming

Call Center

- User Groups definitions
- Support answering priorities
- Support mobile phone call center
- Park and Pickup in round, priority and all ring modes

Messaging

- Presence status control
- DND - Do Not Disturb
- Voice mail & email
- Video mail & email
- IM - instant messaging
- IM Broadcast
- SMS
- File transfer

Desktop Collaboration

- Desktop sharing and control
- Presentation sharing
- Whiteboard sharing
- Electronic pen support
- Voice call during collaboration

Server Platform Requirements

- Dual CPU Pentium 4, 2.6 GHz or above
- 2 GB RAM
- 120 GB disk space
- Operating System: Linux

Network Security

- Voice calls blowfish encryption
- Password based user authentication
- Secured administrator access via SSL2 encryption

Management & UI

- Dot Net administration console
- Multiple servers are optional
- Subscriber license policies management
- On-line information board control
- On-line controlled banner-clip

Enhanced modules

- Redundant/back up server
- Multi-proxy servers support
- Functional with DMZ server
- Load sharing

System Interfaces

- Integrates with H323 and SIP gateways
- Integrates with SMS carriers servers
- Integrates with call termination servers
- Integrates with gatekeepers

Optional hardware accessories

- USB Phones
- Bluetooth headset
- Electronic pen
- IP Phone
- Web cam
- IP Camera



Headquarters: Parallel Communications, Ltd. P.O.Box 2122 Ra'anana ISRAEL ■ Tel: +972 9 7466251 ■ www.Parallel-Communications.com ■ info@Parallel-Communications.com

Offices
San Francisco, California, USA
Tel: + 1 415 722 0157

Frankfurt, Germany
Tel: + 49 61 7294 2802

Marseille, France
Tel: +33 67 064 1111

Sao Paulo, Brazil
Tel: +55 113 812 6865

Bangkok, Thailand
Tel: +662 682 8158/9

Seoul, Korea
Tel: +82 232 70 6100